



# .Kreate Technologies

## AWARDS



Smart Technology Awards



Best Green Technology Award



Best Analytics Performance Award

**Kreate Technologies** a CMMI Level-3 and ISO 9001 & 27001 certified IT & Technology company with presence in pan India, having team of 100 + professionals stepped into the world of IT in 2014, with a vision to make work spaces simple and innovative providing Information Technology on real-time data driven solutions. We have a diverse client base ranging from start-ups to well established, corporate houses. At Kreate Technologies, we understand every client's needs and offer top notch customized IT solutions. We utilize the power of various technologies and assimilate them seamlessly with ever evolving needs.

## PRODUCTS

At Kreate Technologies, we believe in building user friendly products that create the way forward for a faster, quicker & easier tomorrow. Our products being customer centric, insightful and user friendly, we ensure customized solutions designed to fulfil our client's requirements and expectations.

01



### SAMAST SHAKTI

SAMAST (Scheduling, Accounting, Metering and Settlement of Transactions in Electricity) framework in the state with an aim to streamline and automate all functions viz. scheduling, billing, accounting, settlement of transaction and maintaining ledgers etc. and in respect of exchange of electrical energy between the various entities viz. OA (Open Access) consumers/generators and discom.



#### Solution for

State Load Dispatch Centers (SLDC)

#### Features

- Entity Management
- Energy Meter Data Management
- Scheduling and Dispatch
- Energy Accounting
- Weekly DSM account
- Weekly transmission losses (above 66KV feeder)
- Billing, Collection & Disbursement
- Open Access Module
- Renewable Energy
- Outage Planning & Management
- MIS and Dashboard

#### Our Clients





## IEMS

IEMS solution aims to implement an artificial intelligence/self learning based demand forecasting model and deployment of IT tools to optimize the power purchase cost. This is an optimization engine that would use forecasts and other inputs to give desired decision outputs for discom's power management.



### Solution for

Electricity Distribution Company

### Features

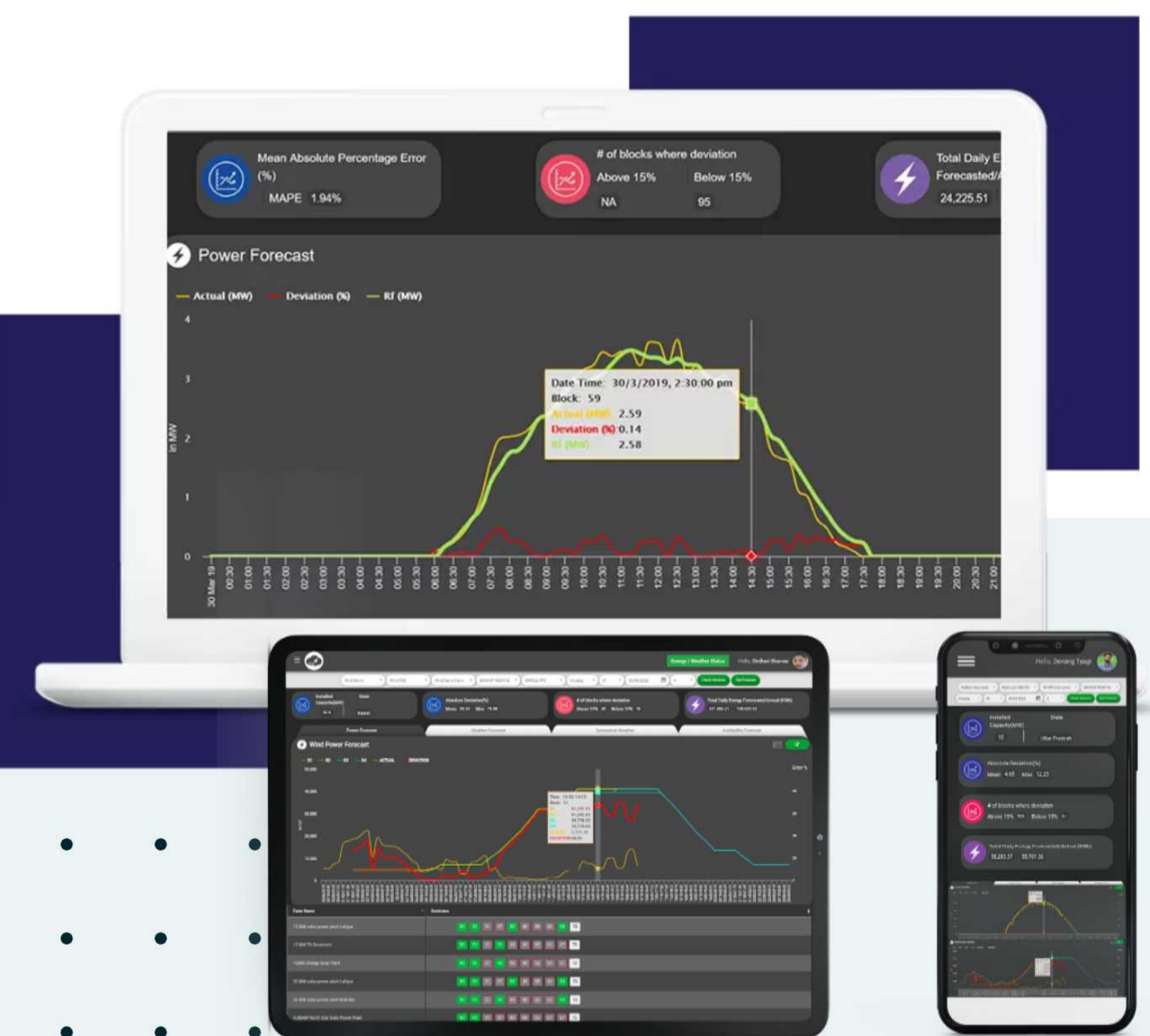
- Demand forecast
- Day ahead, intraday & weekly forecast
- Availability Tracking
- Real time scheduling
- MIS reporting
- Demand supply analysis
- Decision Making dashboard
- RTM Bid submission Module
- Integration with SEM meter & SCADA
- DSM bill verification
- Demand supply gap analysis

### Our Clients



## REDFx

A highly accurate AI and machine learning based renewable energy generation and demand forecasting tool to meet the needs of RE generators, distribution companies, SLDC/RLDC as well as meeting compliance needs of the regulatory commissions. Our easy to use product help to enhance overall energy business performance and simplify reporting.



### Solution for

RE Generators, Discoms, SLDC, RLDC

### Features

- Real Time dashboard
- Wind forecasting
- Solar forecasting
- Demand load forecasting
- Weather forecast
- Scheduling (manual & automated)
- Compatible with all browsers
- Actual vs forecast comparison report
- MIS report as CERC/SERC compliance
- SMS/Email alert to concern official
- Available on cloud and for in-house installation
- Robust QA/QC process is followed to ensure the best forecasting result

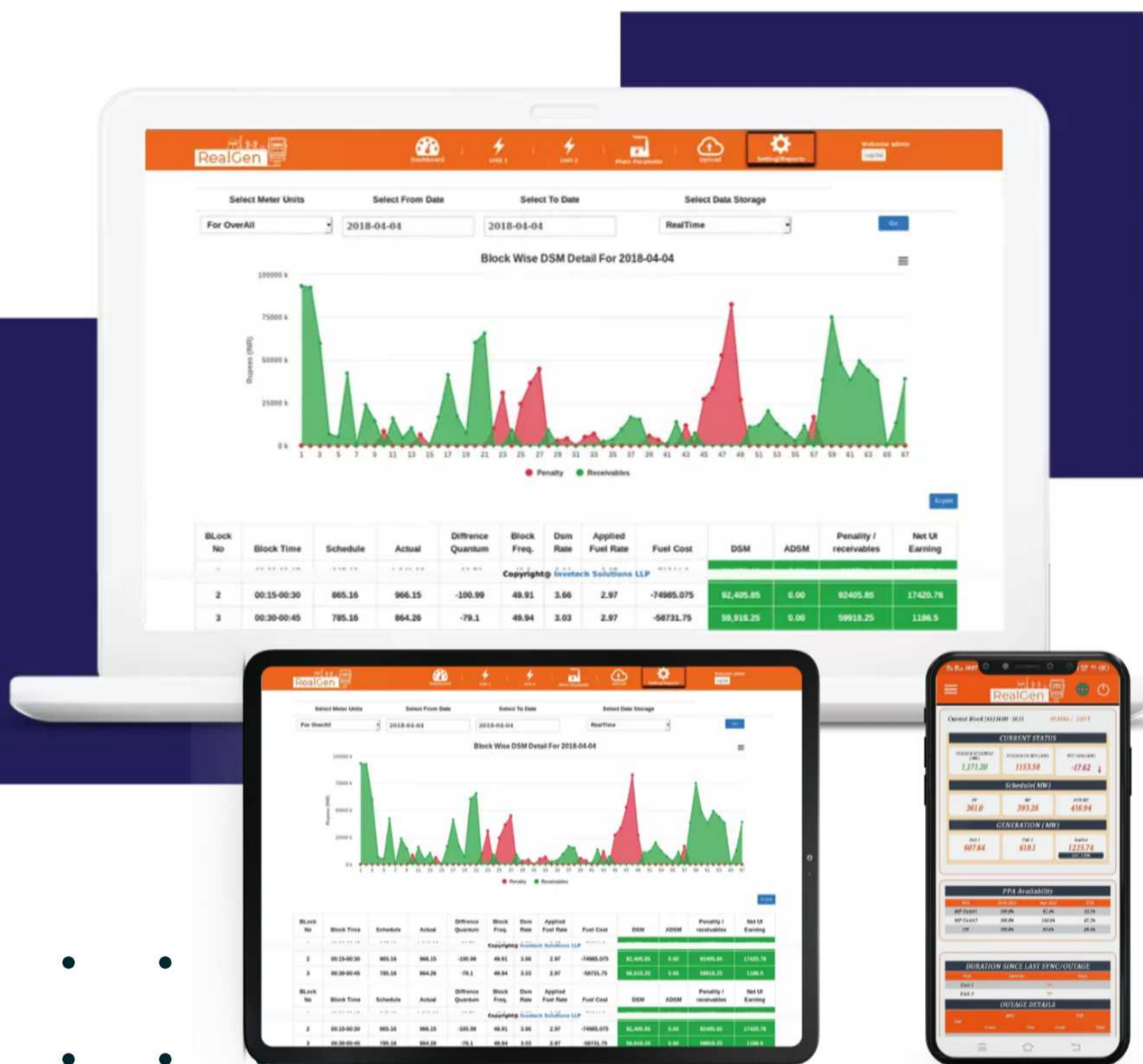
### Our Clients





## RealGen

RealGen software helps power generating companies (gencos) in load balancing, managing power schedules, maximizing revenues and avoiding grid penalties.



### Solution for

Generators (Thermal/Biomass/Biogas)

### Features

- Real-Time Dashboard & Mobile app – Capturing of meter data in 5 sec frequency
- Integration with Existing metering infrastructure
- Integration with nodal RLDC for scheduling data
- 96 Block DSM calculation
- Real-Time metering status
- Auxiliary consumption calculation
- Revenue calculation sheet
- Reactive consumption report
- Voltage report
- MIS reporting

### Our Clients



## PTS GENCO

The PTS Genco solution is designed for trading companies, generators and discoms to support, management of multiple trades (long, medium & short term) and provides complete power scheduling across system operators in multiple markets (Bilateral & Power Exchanges).



### Solution for

Power Trading companies, Generators, DISCOMs

### Features

- Multiple contract management under various markets
- Simplify complex scheduling
- Data fetching from various sources
- Integration with existing system
- Automatic confirmation & settlement of trades
- Communication with market participants including system operators
- Bill generation & bill verification
- Quickly identify the imbalances in the trades & provides real time alerts
- Suggest corrective actions to be performed to arrest imbalances
- Optimal management of cash flow
- Tender management tools

### Our Clients





## Real Time RE Asset Management

Kreate offers an integrated software solution for renewable energy state agencies/developers, to monitor their distributed solar resources in a more efficient manner to reduce costs & increase the RE power generation.



### Solution for

Renewable Agency/RE Generator

### Features

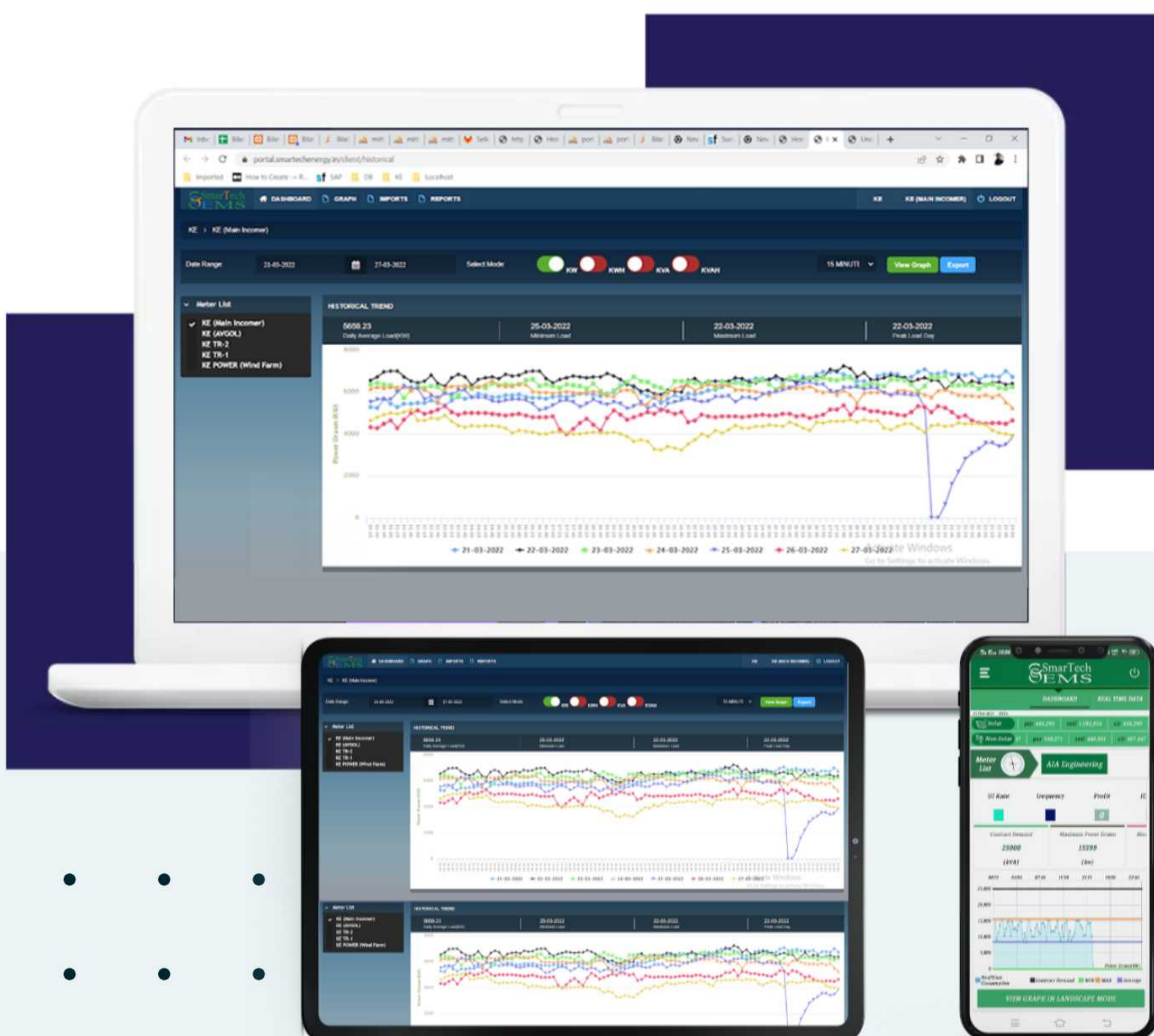
- Mapping all solar site of different vendors in single dashboard
- Vendor wise site detail dashboard
- Revenue loss minimization
- Real time status of all sites
- Real time generation of plants
- Non active site generation loss data
- Project management tool to manage all teams associated with the project
- O&M management for schedule maintenance
- Ticket management system to raise the ticket to respective vendor
- Real time monitoring of surveyed and non-surveyed site
- Capable to adopt existing RMS systems (Record Management System)

### Our Clients



## SMARTech EMS

SmarTech EMS or Smart Energy Management Dashboard, gives clients with up-to-date, accurate analysis of their power consumption and profile, allowing them to take action to address significant users and queries for more efficient energy management.



### Solution for

Power Utilities/Corporates

### Features

- Energy Dashboard provides real-time consumption profile as well as analytical assessment of power procurement efficiency
- Energy Dashboard display is provided on desktop as well as on Mobile devices
- SMS/E-mail alerts on pre-decided events can also be provided through the energy dashboard system
- Dashboard supports different formats of the reports-pdf, excel, word format for different time-lines
- Real time power consumption
- Historical power consumption
- Smart Energy analysis

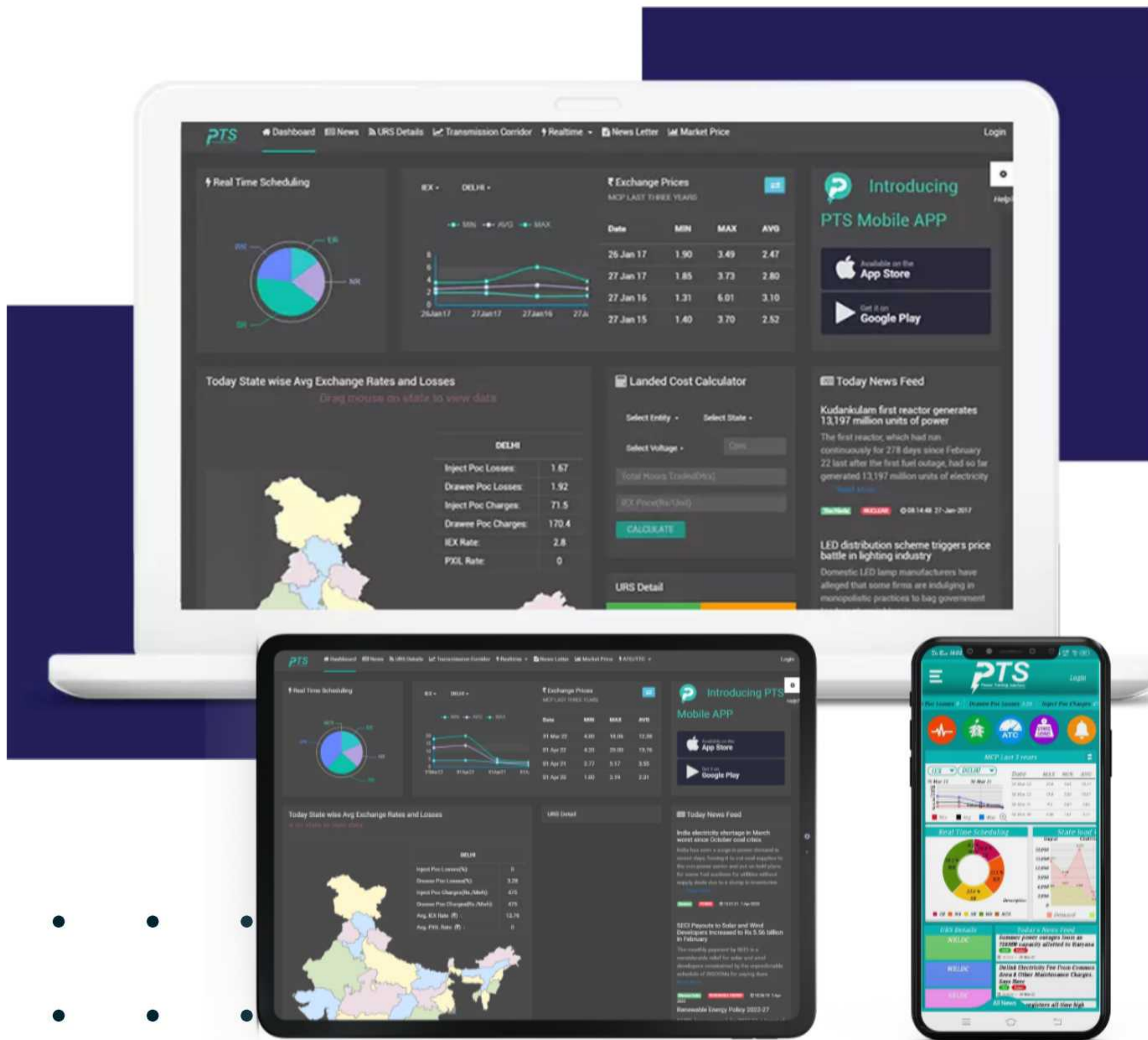
### Our Clients





## PTS

PTS has been designed for power traders to automate components and activities related to power exchange trading starting from bidding till the acknowledgement of payment.



**Solution for**  
Power Traders/Discom

### Features

- Latest news pertaining to power sector
- Real-Time Scheduling details of all 5 RLDC
- Market price comparison for last 6 years with interactive graphs
- Real-Time Transmission corridor availability
- State load details
- All in one single platform PTS
- Complete CRM Portal (Client Relationship Management)

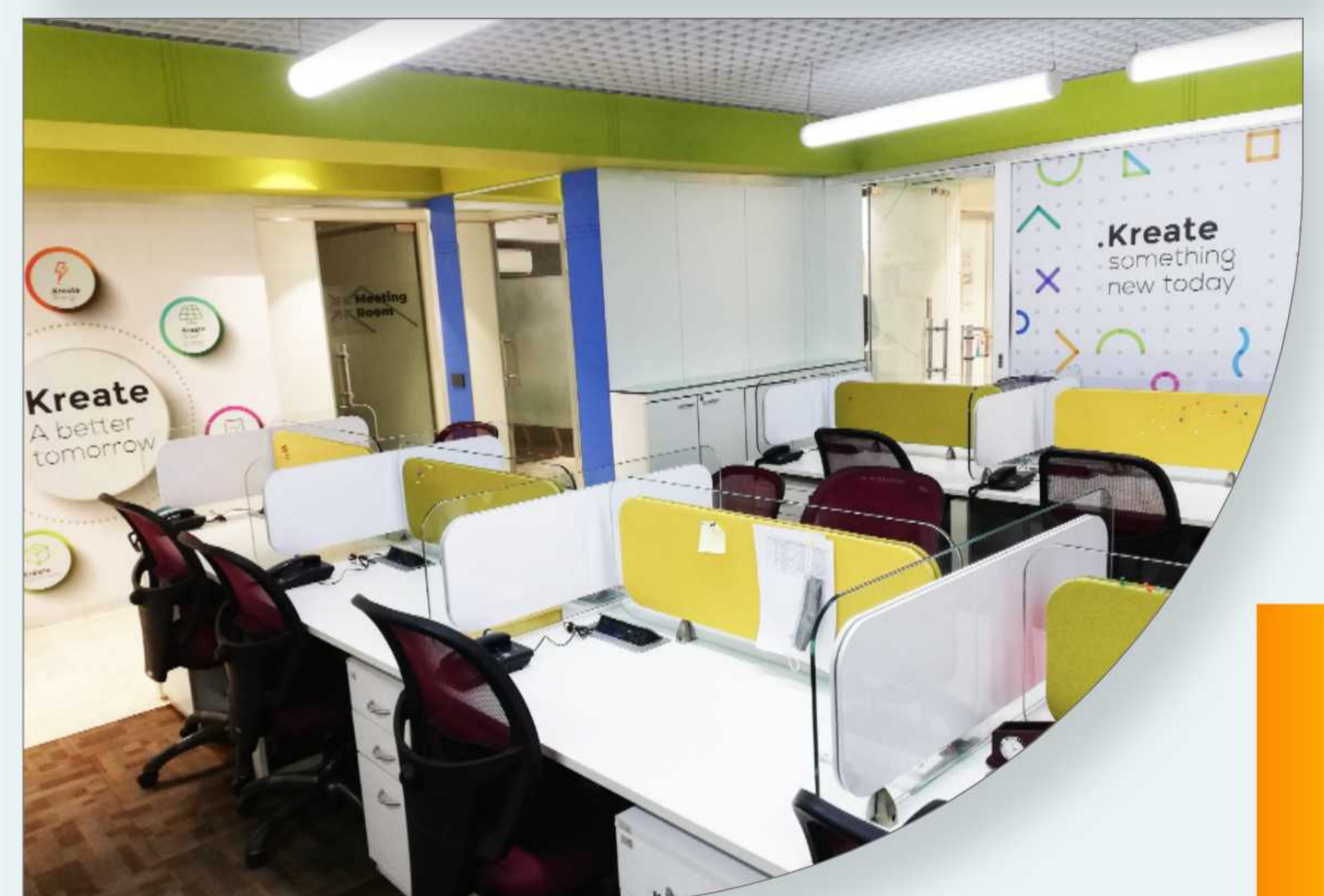
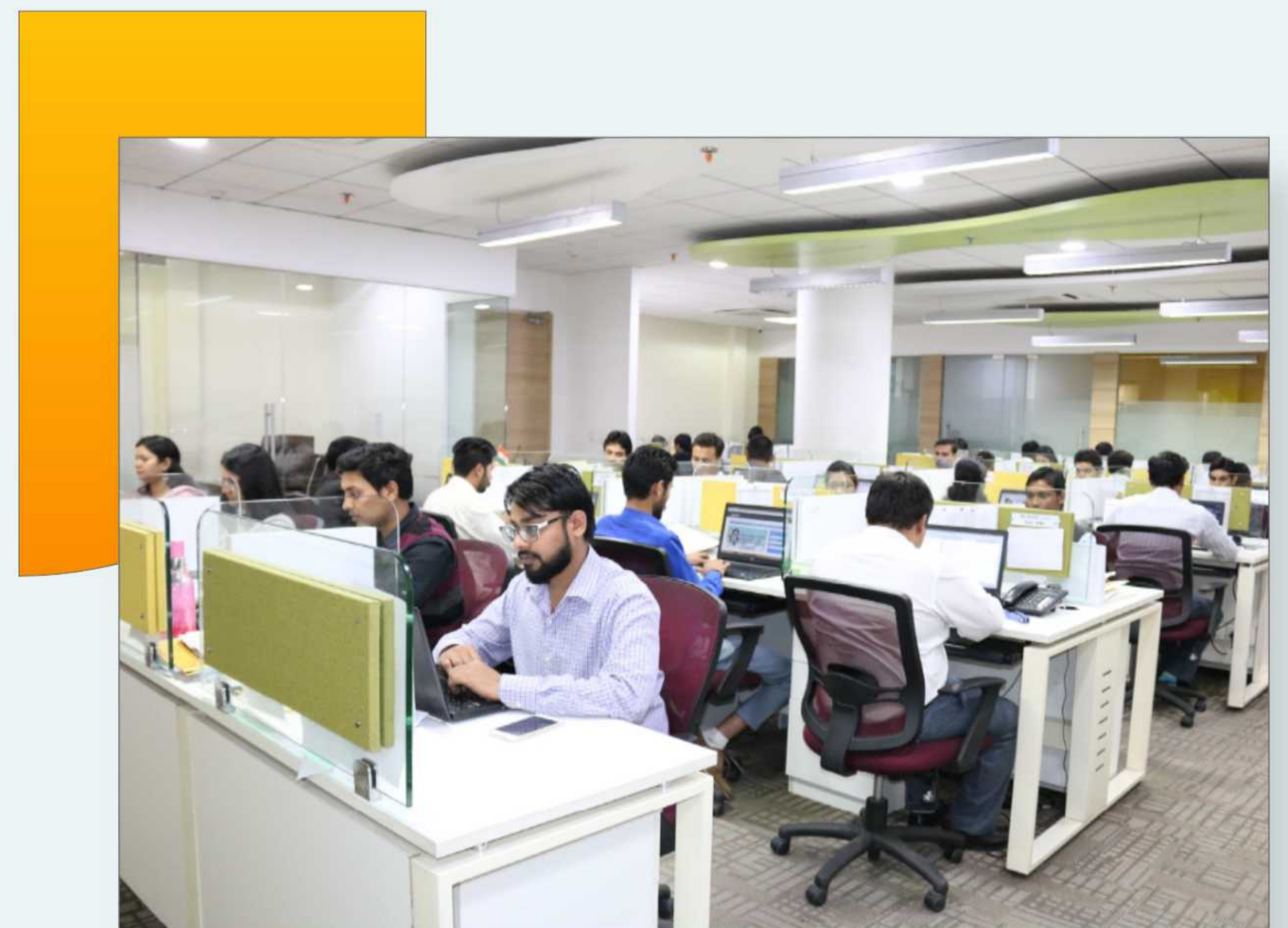
### Our Clients



## OUR TEAM

The team has a rich work experience in the power sector, viz. utilities, SLDCs, renewable energy generators and industries. Well versed in techniques of meteorology, renewable energy systems, advanced machine learning models, weather prediction and data analytics, our team offers a variety of forecasting products and services.

- Diversified team of data scientists/machine learning, weather scientist and experts with rich experience in forecasting activities
- Development support from experienced professionals from IIT Mumbai, Delhi, ISI Delhi and US consultants
- 24\*7 dedicated operation Team support



# ESTEEMED CLIENT LIST



# TECHNOLOGIES

- Blockchain
- Machine Learning
- React Native
- Angular Js
- AWS
- Azure
- MySQL
- PostgreSQL
- Microsoft .Net
- PHP
- Micro Services
- Containers

# SERVICES

- Process Automation Services
- Mobile App Development
- IT Infrastructure Management
- CMS Based Website Development
- Web-Portal Development



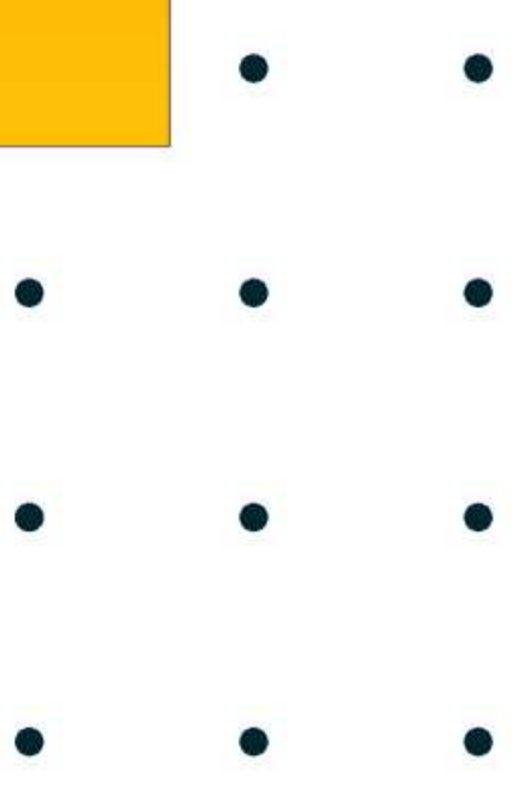
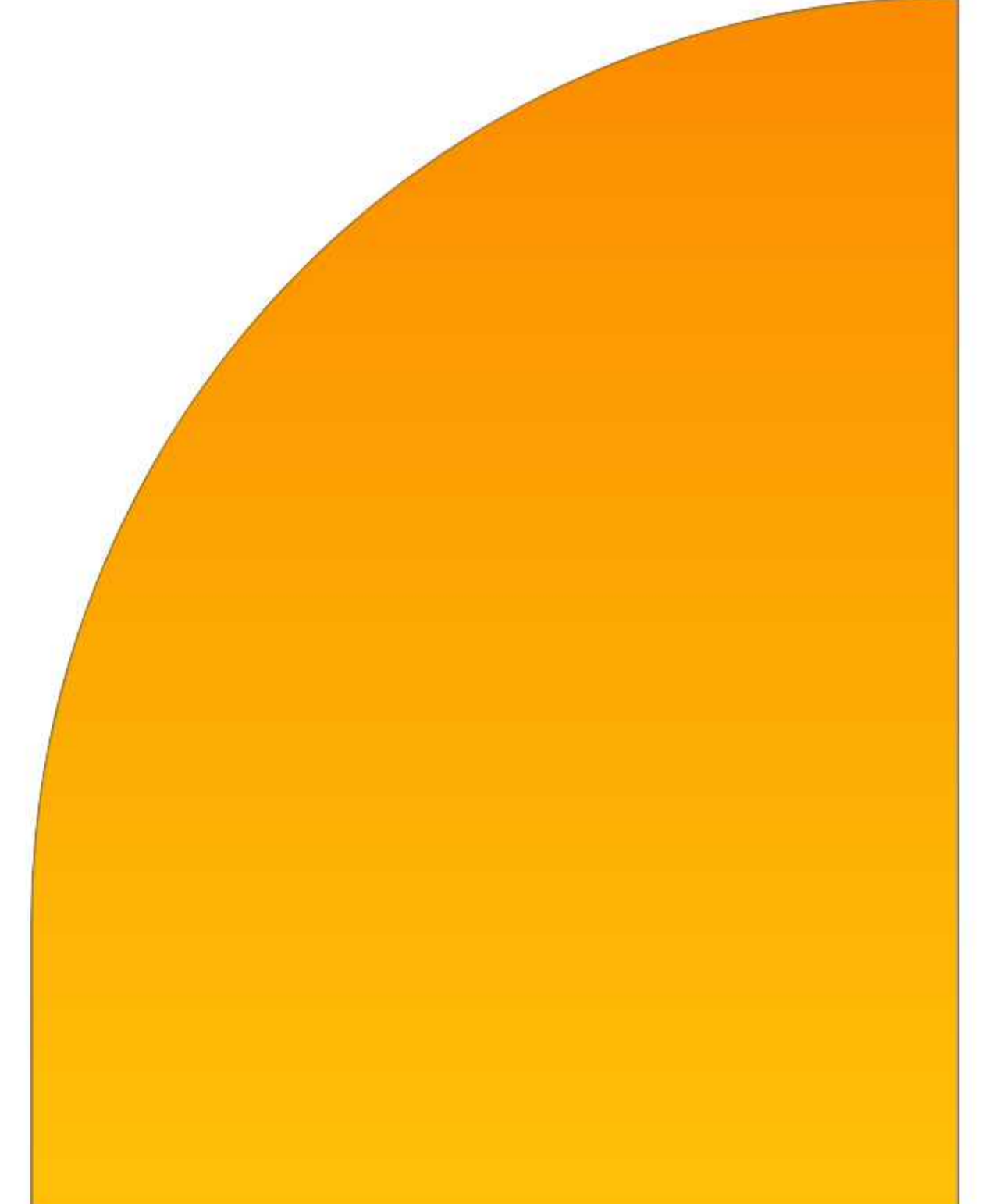
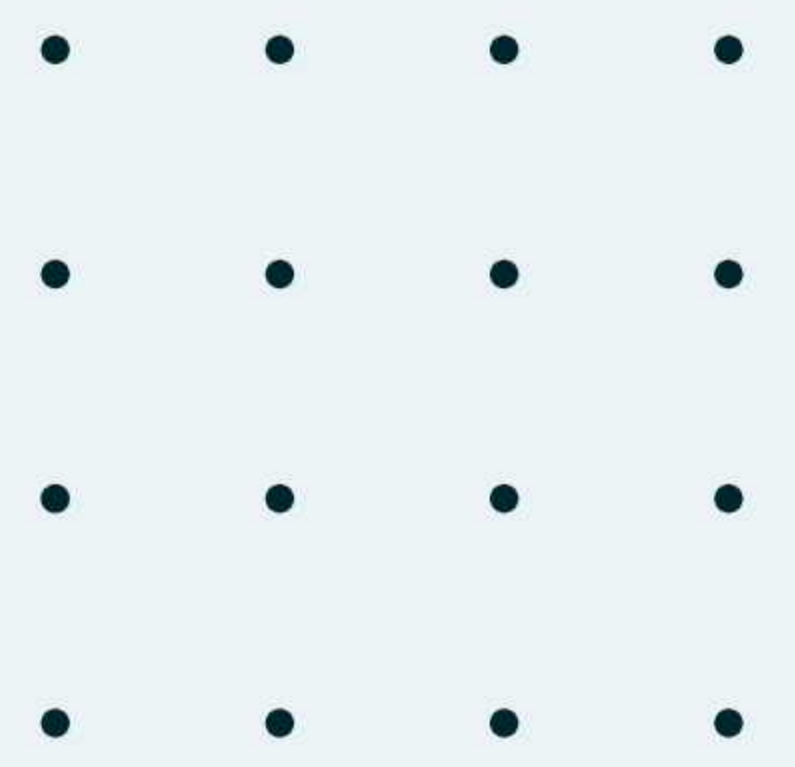
# CORPORATE OFFICE

1002, 1004, Antriksh Bhawan,  
22 KG Marg, New Delhi-110001 India

Tel: +91 11 66666999

Fax: +91 11 66666999

Email: [info@kreateglobal.com](mailto:info@kreateglobal.com)



# OPERATIONS OFFICE

2F-CS, 46-50, Ansal Plaza, Sector-1,  
Vaishali, Ghaziabad-201010 (UP), India

Tel: +91 11 66666900

Fax: +91 11 66666932

Email: [info@kreatetechnologies.com](mailto:info@kreatetechnologies.com)

